



QUADRO II

Multi-Mode Cross-Platform Hybrid Optical-Electronic System

Patent Pending



KEY FEATURES

- ▶ Multi-Mode Observation
- ▶ Individual Channel Selection
- ▶ 100% Detection 24/7
- ▶ Integrated Stadiametric Rangefinder
- ▶ Plug-and-Play: OEM-Ready
- ▶ 7-Year Warranty
- ▶ Made in Canada. ITAR-free

OVERVIEW

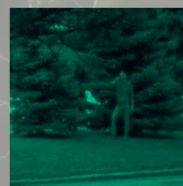
QUADRO II is the first market-ready Multi-Mode Hybrid Optical-Electronic system with 100% detection capability. As night vision and thermal imaging devices have their own performance limitations, a *complementary combination* of these systems therefore eradicates vulnerabilities of each individual system. This is achieved in **QUADRO II**.

QUADRO II represents an observation and aiming system with cross-platform integration capability and can be used either as a hand-held unit or be integrated into any existing platform: unmanned aircrafts, maritime vessels, watchtowers, military vehicles, helicopters and many others.

Being an OEM-oriented system, **QUADRO II** offers highest levels of customization and flexibility for all categories of clients and all applications that demand reliable and compact observation systems.



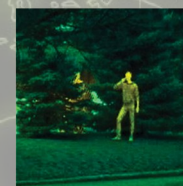
DAY



NIGHT



THERMAL



FUSION



Designed, developed and manufactured by
GENERAL STARLIGHT COMPANY INC.

PO 32154 Harding Blvd, Richmond Hill, ON, L4C 9S3, Canada.

Tel.: +1.905.850.0990 || E-mail: gsci@gsci1.com || Web: www.gsci1.com

DISCLAIMER: Technical description, view, weight, dimensions, some optical-electronic-mechanical features of the product shown herein and/or some of its parts/components may not precisely represent the actual view and values of the working model and are subject to change without prior notice by the sole discretion of the Manufacturer. Contact us for further clarifications. Information contained in this message is proprietary of General Starlight Co., Inc. protected from disclosure, highly confidential, and may be privileged. This information is intended to be conveyed only to designated recipients of the message. If the reader of this message is not the intended recipient, you are hereby notified that any dissemination, unauthorized use, distribution or copying of this material is strictly prohibited and may be unlawful. GSCI Logo is the registered trademark of General Starlight Company Inc. Copyright © 1992-2015 General Starlight Co., Inc. Canada. All rights reserved.



QUADRO II

Multi-Mode Cross-Platform Hybrid Optical-Electronic System

QUADRO II CAN BE CONFIGURED AS:

1. Integration-Ready Solution



Models' names:

- QUADRO II 384i
- QUADRO II 640i

* i = integration

OEM-oriented unit with high levels of additional customization. Receives power from a user-selected power source, delivers video signal to any user-selected display and/or HMD-800. Operation is done via remote control. Unit's body is machined out of high-strength aluminum, hard anodized. Waterproof. Contains threaded holes on each side to ensure solid fixing/mounting to any platform. Remote control included.

Dimensions (LxWxH): 121x102x115 mm. Weight: 1,094 grams

2. Standalone System



Models' names:

- QUADRO II 384s
- QUADRO II 640s

* s = standalone

The standalone QUADRO II (s-model) is the most technologically advanced, self-contained professional observation system. Rugged and waterproof aluminum enclosure. Standard mounting threads. Ergonomic keypad, long battery life. Remote control included. Fully compatible with HMD-800 and can transmit video image to any user-selected display.

3. Weapon-Mountable System



Models' names:

- QUADRO II 384w
- QUADRO II 640w

* w = weapon-mountable

The QUADRO II w-model unit is the weapon-mountable variation system for dismounted law enforcement and military professionals. Certified for use on light-recoil, small tactical firearms only. Remote control included. Fully compatible with HMD-800 and can transmit video image to any user-selected display. Available in Clip-On version as well (to be mounted in front of daytime scope).

APPLICATIONS



Unmanned
Aircrafts



Maritime
Security



Military
Vehicles



VIP
Security



Border
Security



Search &
Rescue



Special
Forces

AND
MORE...

UNPARALLELED OPERATIONAL ADVANTAGES

Day Mode

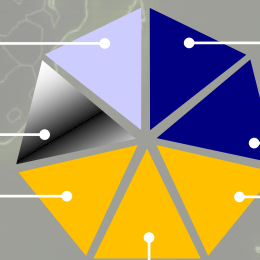
Professional-grade, quality CCD-based imaging system.

Thermal Mode

FPA coupled to a high-speed objective lens. Can be used anytime, 24/7.

Fusion Day Mode

Real-time lag-free electronic overlay of *Thermal* and *Day* modes. Achieves 100% detection.



Night Passive Mode

High performance CCD-based imaging system implements GSCI proprietary algorithms to boost sensitivity in low-light conditions up to half-moon.

Night Active Mode

In total darkness CCD-based imaging system is aided by a powerful LED-IR illuminator. Visibility range increases to 150m.

Fusion Night Passive Mode

Real-time lag-free electronic overlay of *Thermal* and *Night Passive* modes. Achieves 100% detection.

Fusion Night Active Mode

Real-time lag-free electronic overlay of *Thermal* and *Night Active* modes. Achieves 100% detection.

DISCLAIMER: Technical description, view, weight, dimensions, some optical-electronic-mechanical features of the product shown herein and/or some of its parts/components may not precisely represent the actual view and values of the working model and are subject to change without prior notice by the sole discretion of the Manufacturer. Contact us for further clarifications. Information contained in this message is proprietary of General Starlight Co., Inc. protected from disclosure, highly confidential, and may be privileged. This information is intended to be conveyed only to designated recipients of the message. If the reader of this message is not the intended recipient, you are hereby notified that any dissemination, unauthorized use, distribution or copying of this material is strictly prohibited and may be unlawful. GSCI Logo is the registered trademark of General Starlight Company Inc.

Copyright © 1992-2015 General Starlight Co., Inc. Canada. All rights reserved.